

# Rotary Overview

## Rotary Actuators

p.630



Rack and pinion swiveling mechanism  
Adjustable stroke  
High torque  
Magnetic sensor ready

## Intermediate Stopping

p.640



The intermediate stopping unit RTD is a stroke reducer, acting against the rack of the swiveling unit RT, by a piston rod.  
When not pressurized a spring keeps the RTD piston rod against the RT rack.

## Rotary Indexing Tables

p.656



Multiple-position indexing tables  
Counter clockwise option  
High torque  
Magnetic sensor ready

## Two-Position Rotary Actuators

p.644



Two-position swiveling mechanism  
High-dampening performance  
Adjustable positions  
Magnetic sensor ready

## Three-Position Rotary Actuators

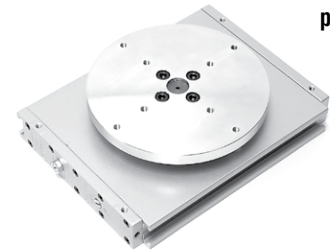
p.646



Three-position swiveling mechanism  
High-dampening performance  
Adjustable positions  
Magnetic sensor ready

## Low-Profile Rotary Actuators

p.666



Low profile, high torque from elliptical piston  
Disc style and shaft styles available  
Separate cushion, angle, backlash adjustments  
Magnetic sensor ready

## Free Engineering Design Service

### Save Time—Use EMI's FREE Engineering Service

### Save Money—Assemble the EOAT yourself

It's simple, it's free, and there's no obligation. Send us your part and a completed datasheet (see page 910). Our EOAT engineers will design a complete tooling for you in 3D CAD. We will also supply a complete bill of materials with prices. There's no cost or obligation to you for this service. Obviously, we hope that you are happy with our service and buy the components from us. Then assemble the tooling yourself and save money.

### Save Headaches—Use EMI's build service and have EMI assemble the EOAT for you.

